



ABOUT REARO

From our beginnings in the Shetland Islands to our state-of-the-art Glasgow manufacturing facility, Rearo has grown over the past 30 years into a trusted supplier for commercial projects. Our commitment to quality is clear in our renowned products like wall lining systems, washroom cubicles and vanity units.

Rearo Commercial offers specialised expertise, delivering tailored solutions across healthcare, education, hospitality, and beyond. We understand the unique demands of these sectors, providing everything from robust wall panels and bespoke washroom cubicles to vanity units, antimicrobial wall linings and solid surfaces.

Our vigorous in-house quality control and our dedicated fleet ensures that your projects, large or small, are executed with precision and delivered reliability on time across the country. Find the perfect surface solutions, designed and manufactured in the UK to meet your exacting standards.



Please ask about our FSC® certified products.

INDEX

04 CUBICLES

Serving sectors from education and healthcare to leisure, retail and hospitality, Rearo focuses on delivering durable, aesthetically pleasing, and sector-specific solutions. Our product range, known for its robust fittings, safety features, and wide selection of décors offers a blend of functionality and quality for all budgets and requirements.

04	RAPIDFIT	Fast, easy-fit and off-the-shelf.
08	ASPIRE	Custom fit using the RapidFit colour range.
12	ENHANCE	3 core materials, 4 ironmongery options, 40 décors.
16	ELEVATE	Superior comfort with a privacy option.
20	TRIUMPH	For the most sophisticated spaces.
24	TRIUMPH PRIVACY	Representing the pinnacle of luxury.
28	NURTURE	Designed to support nursery and primary

32 IPS PANELS

Integrated Plumbing System (IPS) panels are designed to conceal and provide easy access to plumbing services in washrooms.

34 VANITY UNITS

Vanity units provide durable, hygienic, and complementary solutions concealing plumbing while resisting heat, scratches, and impacts.

35 WASH TROUGHS

Solid surface wash troughs offer a luxurious, durable, and stain-resistant alternative to stainless steel, creating a seamless, integrated vanity unit.

36 WALL LINING SYSTEMS

36	TRADELINE	Tradeline offers waterproof panels with a range of décors and easy-clean, anti-bacterial properties.
38	SELKIE	Selkie Board, Rearo's flagship retail bathroom wall panel, is ideally suited for residential developments.
38	ANTIMICROBIAL	Rearo's antimicrobial wall lining inhibits bacterial growth, making it ideal for healthcare and catering.
38	MAGNETIK	Magnetik Board provides a full floor-to-ceiling, magnetic whiteboard cladding system.
38	BÜHNE	3m high Bühne Board provides seamless cladding for large public spaces and office developments.



RAPIDFIT OFF-THE-SHELF WASHROOM CUBICLES.

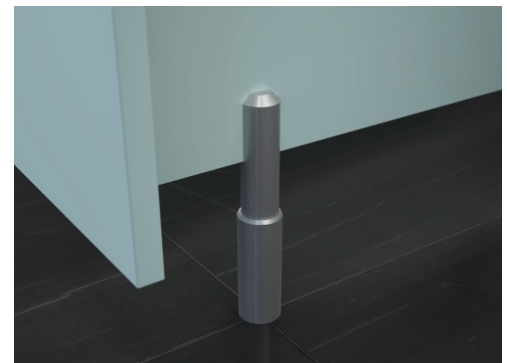
The **RAPIDFIT** range provides quick, off-the-shelf cubicles and made-to-order IPS or vanity units, ideal for offices and hospitality venues. Delivered flat-packed for easy installation, it offers customisable components to suit your needs.



KEY FEATURES

- For projects on a tight deadline.
- Simplified colour choice.
- No need to compromise on quality.
- Lift-off emergency hinges
- Emergency release lock.

INSTANT OFF THE SHELF.





OFF-THE-SHELF
WASHROOM CUBICLES.

RAPIDFIT

IRONMONGERY

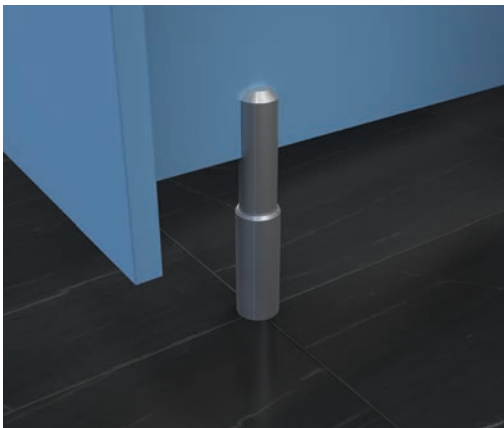
POWDER-COATED NICKEL



**HAT &
COAT HOOK.**



HINGE.



**CUBICLE
LEG.**



LOCK.



HEADRAIL.

TECHNICAL SPECIFICATION

Maximum Height 1950mm FFL to top of headrail

Maximum Depth 1500mm

Floor Clearance 150mm

Ironmongery: Aluminum (PPC) Nickel

Décors Available 9



PERFORMANCE

MR MFC Moisture-resistant Melamine Faced Chipboard panels have a thickness of 18mm and are **perfect for dry environment** washrooms. All edges are sealed and protected with **2mm ABS edging** for added durability and finish.

SGL Solid grade laminate is exceptionally **durable and resistant to impact**, with all surfaces **impervious to water**. Panels have a nominal thickness of 13mm and a black core throughout. All panels are **carefully machined** to provide an elegantly polished, bullnosed black edge.

DETAILING

Support Leg

150mm legs Adjustment \pm 20mm.

Headrail 'U' shape fixed to pilasters with screws from above cubicle.

Indicator bolt and keeper

Slide action lock with bolt through concealed fixings. Circular, slim, rebated faceplate and emergency release facility.

Ironmongery finish: Aluminium is polyester powder coated (PPC) with a 'Nickel' finish.

Hinges Lift off, gravity hinges with cover plates to conceal fixings.

Drilling All doors are pre-drilled to suit hinges and locks supplied. Fixing brackets, support legs and coat hooks are to be drilled on site to suit.



ASPIRE

CUSTOM-FIT WASHROOM CUBICLES.

For those projects on a tighter deadline, the **ASPIRE** range uses our range of RapidFit colours to create made to measure cubicles that don't need to be altered on site. When quality, budget and lead time matter more than colour options, the **ASPIRE** range will deliver every time.



KEY FEATURES

- For projects on a tight deadline.
- Simplified colour choice.
- No need to compromise on quality.
- Lift-off emergency hinges
- Emergency release lock.

WHEN **QUALITY**,
BUDGET & TIME COUNT.





CUSTOM-FIT
WASHROOM CUBICLES.

ASPIRE

IRONMONGERY

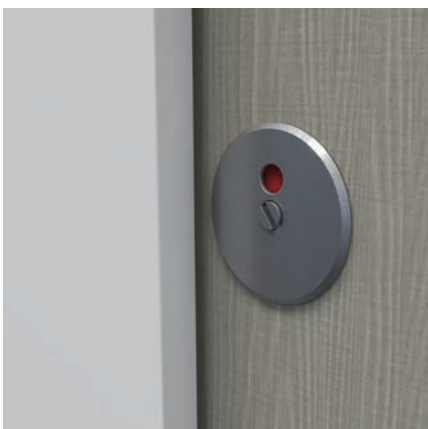
NICKEL ALUMINIUM



SLIDE LOCK.



**CUBICLE
LEG.**



LOCK.



HINGE.



HEADRAIL.

TECHNICAL SPECIFICATION

Maximum Height 1950mm FFL to top of headrail

Maximum Depth 1840mm

Floor Clearance 150mm

Décors Available 9

PERFORMANCE

MR MFC Moisture-resistant Melamine Faced Chipboard panels have a thickness of 18mm and are **perfect for dry environment** washrooms. All edges are sealed and protected with **2mm ABS edging** for added durability and finish. **Made to measure.**

SGL Solid grade laminate is exceptionally **durable and resistant to impact**, with all surfaces **impervious to water**. Panels have a nominal thickness of 13mm and a black core throughout. All panels are **carefully machined** to provide an elegantly polished, bullnosed black edge. **Made to measure.**

DETAILING

Support Leg 150mm legs
Adjustment \pm 20mm.

Fixings Aluminium 'U' channel brackets with
bolt through fixings

Indicator bolt and keeper Slide action
lock with bolt through concealed fixings.
Circular, slim, rebated faceplate and
emergency release facility.

Headrail 'U' shape fixed to pilasters with
screws from above cubicle.

Hinges Lift off, gravity hinges with cover
plates to conceal fixings.

Ironmongery finish Aluminium is polyester
powder coated (PPC) with a 'Nickel' finish.

Drilling All doors are pre-drilled to suit hinges and locks supplied. Fixing brackets, support legs and coat hooks are to be drilled on site to suit.



ENHANCE

DESIGN YOUR **DREAM** WASHROOM.

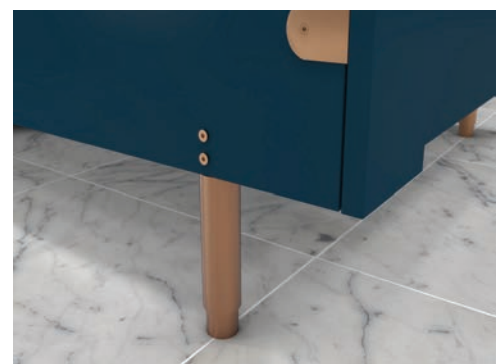
Design your ideal washroom with a wealth of customisation options. Choose from three core materials, four ironmongery finishes, and over 40 decors, resulting in thousands of possible combinations. This unprecedented level of choice empowers customers to bring their dream washroom to life.



KEY FEATURES

- Core materials suitable for a variety of environments.
- Four ironmongery finish options.
- Availability of HPL cubicles.
- Our bespoke cubicles are manufactured and delivered within four weeks..

THREE CORES & FOUR IRONMONGERY TYPES.

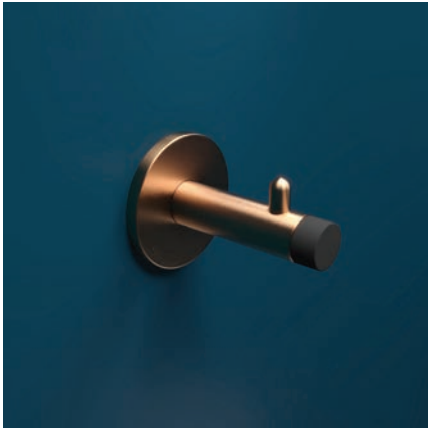




DESIGN YOUR
DREAM WASHROOM.

ENHANCE IRONMONGERY

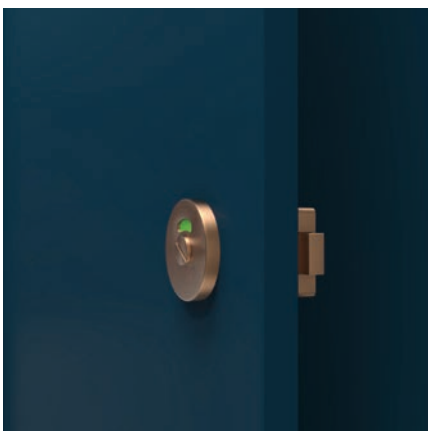
NICKEL ALUMINIUM, STAINLESS
STEEL, BLACK & BRASS



**HAT &
COAT HOOK.**



**CUBICLE
LEG.**



LOCK.



HINGE.



HEADRAIL.

TECHNICAL SPECIFICATION

Maximum Height 1950mm FFL to top of headrail

Maximum Depth 1840mm

Floor Clearance 150mm

Ironmongery Aluminium (PPC) Nickel, Stainless Steel, Black & Brass

Décors Available 40

PERFORMANCE

MR MFC Moisture-resistant Melamine Faced Chipboard panels have a thickness of 18mm and are **perfect for dry environment** washrooms. All edges are sealed and protected with **2mm ABS edging** for added durability and finish.

HPL High Pressure Laminated panels are built to withstand (normal traffic). Cubicles are crafted using **18mm moisture-resistant MDF** and bonded with durable **high-pressure laminate** providing a 20mm nominal thickness. The edges are protected with **2mm ABS edging** for added durability and finish.

SGL Solid grade laminate is exceptionally **durable and resistant to impact**, with all surfaces **impervious to water**. Panels have a nominal thickness of 13mm and a black core throughout. All panels are **carefully machined** to provide an elegantly polished, bullnosed black edge.

DETAILING

Support Leg 150mm legs
Adjustment \pm 20mm.

Indicator bolt and keeper

Lever turn/slide action lock with bolt through concealed fixings. Circular slim faceplate and emergency release facility.

Hinges Gravity hinges
with rise and fall.

Drilling All doors are pre-drilled to suit hinges and locks supplied. Pilasters are also pre-drilled to suit hinges. Fixing brackets, support legs and coat hooks are to be drilled on site to suit.

Headrail U' or 'D' shape fixed to pilasters with screws from above cubicle (depending on ironmongery choice)

Fixings: 'U' channel brackets.

Wall Channels

- Aluminium is polyester powder coated (PPC) with a 'Nickel' finish
- Stainless steel (316 grade)
- Black (PVD)
- Brass (PVD)



ELEVATE

CREATE A SLEEK
& **STYLISH** SPACE.

ELEVATE cubicles offer enhanced height and privacy for superior comfort and security. Durable nickel ironmongery, including essential safety features like lift-off hinges and emergency release locks, makes them ideal for education and hospitality environments. For a sleek, minimalist aesthetic, the **ELEVATE** range is also available without privacy features, creating a floating appearance when installed on support legs.



KEY FEATURES

- These cubicles offer enhanced privacy compared to traditional designs.
- Doors are equipped with lift-off emergency hinges and emergency release locks.
- Robust, powder-coated nickel ironmongery ensures durability in high-traffic environments..

MORE HEIGHT AND
ADDITIONAL PRIVACY.





CREATE A SLEEK
& **STYLISH** SPACE.

ELEVATE

IRONMONGERY

NICKEL ALUMINIUM



**HAT &
COAT HOOK.**



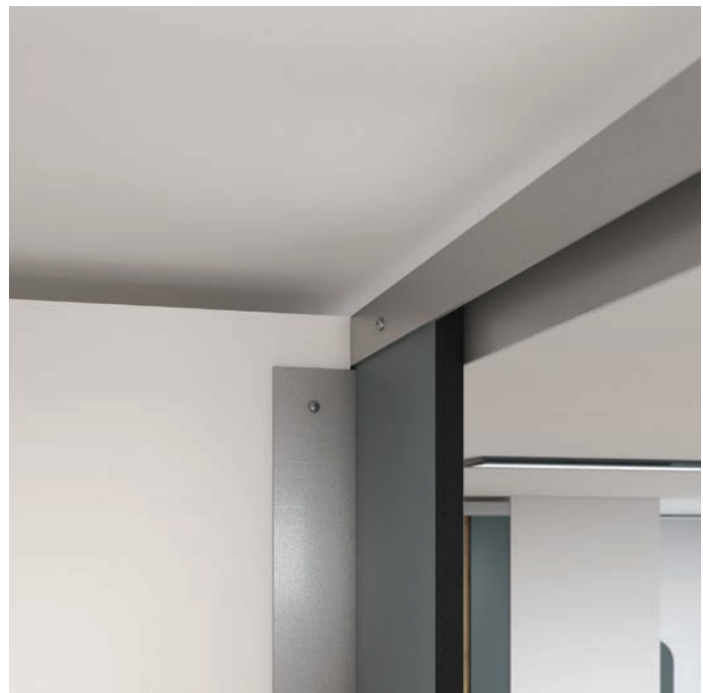
**FRONT
PILASTER.**



LOCK.



HINGE.



HEADRAIL.

TECHNICAL SPECIFICATION

Maximum Height 2790mm FFL to top of headrail

Maximum Depth 1840mm

Floor Clearance 0mm - 10mm at doors(20mm – 150mm with legs)

Ceiling Clearance 20mm

Décors Available 40

PERFORMANCE

MR MFC Moisture-resistant Melamine Faced Chipboard panels have a thickness of 18mm and are **perfect for dry environment** washrooms. All edges are sealed and protected with **2mm ABS edging** for added durability and finish.

SGL Solid grade laminate is exceptionally **durable and resistant to impact**, with all surfaces **impervious to water**. Panels have a nominal thickness of 13mm and a black core throughout. All panels are **carefully machined** to provide an elegantly polished, bullnosed black edge.

DETAILING

Support Leg Adjustment $\pm 5\text{mm}$ (20mm legs), $\pm 20\text{mm}$ (50mm - 150mm legs).

Indicator bolt and keeper

Slide action lock with bolt through concealed fixings. Circular, slim, rebated faceplate and emergency release facility.

Hinges Lift off, gravity hinges with cover plates to conceal fixings.

Headrail 'J' channel fixed from inside of the cubicle.

Fixings Partition fixed to wall: 'U' channel

Pilaster fixed to wall: 'U' channel

Pilaster fixed to partition: 'U' channel

(Optional) Partition and pilasters fixed to floor: 'U' channel

Ironmongery finish: Aluminium is polyester powder coated (PPC) with a 'Nickel' finish.

Drilling All doors are pre-drilled to suit hinges and locks supplied. Pilasters are also pre-drilled to suit hinges. Fixing brackets, support legs and coat hooks are to be drilled on site to suit.



TRIUMPH

FOR THE **MOST** SOPHISTICATED SPACES.

TRIUMPH offers a timeless, modern design characterised by smooth surfaces, clean lines, seamless fronts, and minimalist ironmongery. The carefully rebated pilasters and doors create a striking flush-fronted appearance, giving the illusion of floating walls. Meticulously crafted to embody the height of luxury, seamlessly blending style and function for a truly distinguished aesthetic.



KEY FEATURES

- Hand-finished hardwood edges for both durability and a luxurious feel.
- Privacy is ensured with minimal 20mm gaps at the floor and ceiling.
- Pre-drilled pilasters, doors, and over-panels simplify installation.
- Doors are equipped with lift-off hinges and emergency release locks.
- Durable, long-lasting stainless steel ironmongery completes the design.



TIMELESS

MODERN DESIGN.





TRIUMPH

IRONMONGERY

STAINLESS STEEL



**HAT &
COAT HOOK.**



HINGE.



**CUBICLE
LEG.**



LOCK.



HEADRAIL.

TECHNICAL SPECIFICATION

Maximum Height 2790mm FFL to top of headrail

Maximum Depth 1840mm

Floor Clearance 20mm – 150mm

Ceiling Clearance 20mm

Décors Available 40+

PERFORMANCE

HPL High Pressure Laminated panels are built to withstand (normal traffic) and provide sturdy luxury. They are crafted using **30mm moisture-resistant MDF** and bonded with durable **high-pressure laminate** providing a 32mm nominal thickness. Doors and Pilasters showcase **elegant, rebated hardwood edges** that are sanded and sealed in manufacturing. Partitions are manufactured using 19mm moisture-resistant chipboard and are finished in **ABS edging** for added durability and finish

SGL Solid grade laminate is exceptionally **durable and resistant to impact**, with all surfaces **impervious to water**. Panels have a nominal thickness of 13mm and a black core throughout. All panels are **carefully machined** to provide an elegantly polished, bullnosed black edge.

DETAILING

Support Leg Stainless Steel.
Adjustment $\pm 5\text{mm}$ (20mm legs), $\pm 20\text{mm}$ (85mm - 150mm legs).

Indicator bolt and keeper
Stainless Steel 316 lever turn with bolt through concealed fixings. Circular slim 7mm faceplate and emergency release facility.

Hinges Stainless Steel 316, lift off, gravity hinges with cover plates to conceal fixings.

Drilling All doors are pre-drilled to suit hinges and locks supplied. Pilasters are also pre-drilled to suit hinges. Fixing brackets, support legs and coat hooks are to be drilled on site to suit.

HPL Headrail 32mm thick over panel fixed to pilasters with aluminium plates painted Nickel finish. 'L' channel for support.

SGL Headrail 'J' channel fixed from inside of the cubicle.

Fixings Fixings:
Partition fixed to wall: Aluminium 'U' channel painted Nickel finish.

Pilaster fixed to wall: Aluminium 'L' channel painted Nickel finish.

Pilaster fixed to partition: Aluminium 'U' channel painted Nickel finish.



TRIUMPH PRIVACY

FOR THE **MOST** SOPHISTICATED SPACES.

TRIUMPH PRIVACY offers enhanced privacy while maintaining the sleek aesthetic of the Triumph range. Featuring floor-mounted pilasters and partitions, with only a 10mm gap beneath the door, these cubicles provide modesty without sacrificing their beautiful design.



KEY FEATURES

- Hand-finished hardwood edges for both durability and a luxurious feel.
- Near-complete privacy with minimal 10-20mm gaps at the floor and ceiling.
- Pre-drilled pilasters, doors, and over-panels simplify installation.
- Doors are equipped with lift-off hinges and emergency release locks.
- Durable, long-lasting stainless steel ironmongery completes the design.

MODESTY

WITHOUT COMPROMISE.





FOR THE **MOST**
SOPHISTICATED SPACES.

TRIUMPH PRIVACY IRONMONGERY

STAINLESS STEEL



**HAT &
COAT HOOK.**



HINGE.



**FRONT
PILASTER.**



LOCK.



**PILASTER
CHANNEL.**

TECHNICAL SPECIFICATION

Maximum Height 2790mm FFL to top of headrail

Maximum Depth 1840mm

Floor Clearance 20mm – 150mm

Ceiling Clearance 20mm

Décors Available 40+

PERFORMANCE

HPL High Pressure Laminated panels are built to withstand (normal traffic) and provide sturdy luxury. They are crafted using **30mm moisture-resistant MDF** and bonded with durable **high-pressure laminate** providing a 32mm nominal thickness. Doors and Pilasters showcase **elegant, rebated hardwood edges** that are sanded and sealed in manufacturing. Partitions are manufactured using 19mm moisture-resistant chipboard and are finished in **ABS edging** for added durability and finish

SGL Solid grade laminate is exceptionally **durable and resistant to impact**, with all surfaces **impervious to water**. Panels have a nominal thickness of 13mm and a black core throughout. All panels are **carefully machined** to provide an elegantly polished, bullnosed black edge.

DETAILING

Hinges Stainless Steel 316, lift off, gravity hinges.

Indicator bolt and keeper

Stainless Steel 316 lever turn with bolt through concealed fixings. Circular slim 7mm faceplate and emergency release facility.

Drilling All doors are pre-drilled to suit hinges and locks supplied. Pilasters are also pre-drilled to suit hinges. Fixing brackets, support legs and coat hooks are to be drilled on site to suit.

HPL Headrail 32mm thick over panel fixed to pilasters with aluminium plates painted Nickel finish. 'L' channel for support.

SGL Headrail 'J' channel fixed from inside of the cubicle.

Fixings Partition fixed to wall and floor: Aluminium 'U' channel painted Nickel finish.

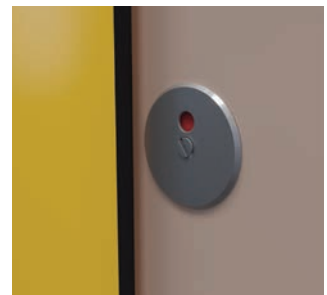
Pilaster fixed to wall and floor: Aluminium 'L' channel painted Nickel finish.

Pilaster fixed to partition: Aluminium 'U' channel painted Nickel finish.



NURTURE WASHROOM NURSERY CUBICLES.

NURTURE offers a range of child-friendly washroom solutions designed for nurseries and primary schools, including toilet cubicles, vanity units, wash troughs, and IPS panels. These customisable products prioritise privacy, safety, and appealing looks for young children. Manufactured from durable 12mm compact grade laminate (SGL), **NURTURE** cubicles are ideal for high-traffic environments and available in three playful designs: Wave, Ranch, and Lollipop.



KEY FEATURES

- Hygienic, Low Maintenance and easy to clean.
- Colours that meet PAS 6463:2022 neurodiversity requirements
- Hard-wearing and strong- Impact Resistant.
- Doors are fitted with lift-off emergency hinges as well as an emergency release lock.
- Anti-finger trap hinges.



SOOTHING SENSORY ENVIRONMENT.

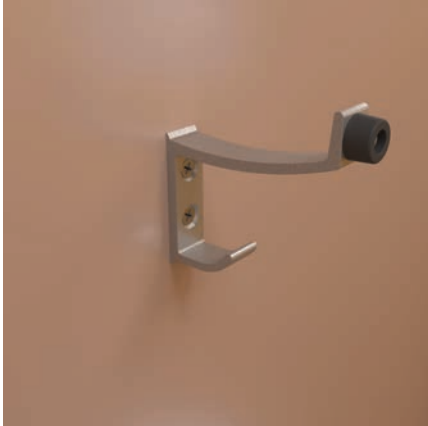


NURSERY
WASHROOM CUBICLES.

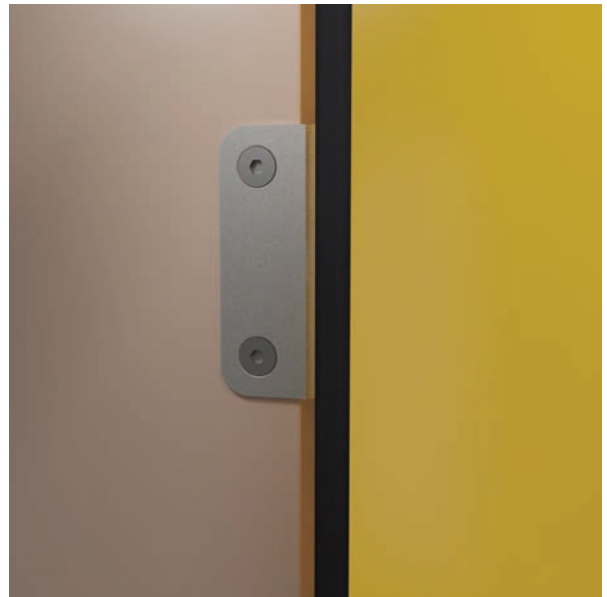
NURTURE

IRONMONGERY

POWDER-COATED NICKEL



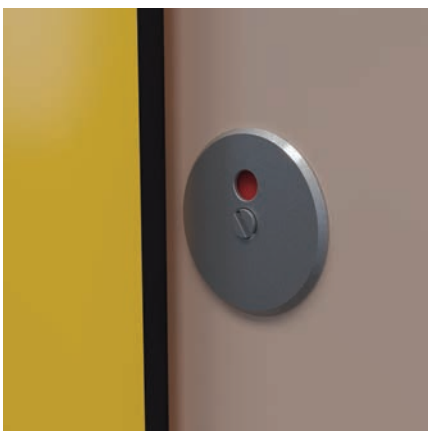
**HAT &
COAT HOOK.**



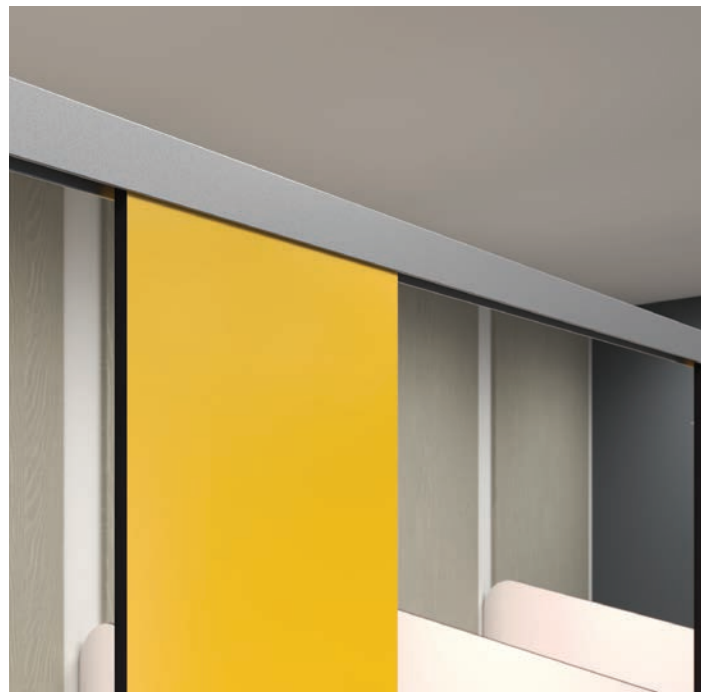
HINGE.



**CUBICLE
LEG.**



LOCK.



HEADRAIL.

TECHNICAL SPECIFICATION

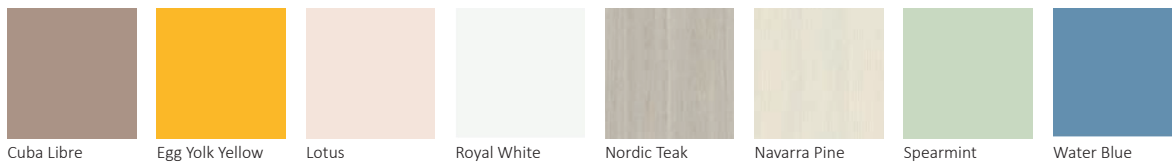
Maximum Height 2790mm FFL to top of headrail

Maximum Depth 1840mm

Floor Clearance 20mm – 150mm

Ceiling Clearance 20mm

Décors Available 8



PERFORMANCE

SGL Solid grade laminate is exceptionally **durable and resistant to impact**, with all surfaces **impervious to water**. Panels have a nominal thickness of 13mm and a black core throughout. All panels are **carefully machined** to provide an elegantly polished, bullnosed black edge.

DETAILING

Support Leg 150mm legs
Adjustment ± 20 mm.

HPL Headrail 'U' shape fixed to pilasters
with screws from above cubicle.

Indicator bolt and keeper Slide action
lock with bolt through concealed fixings.
Circular, slim, rebated faceplate and
emergency release facility.

Fixings Aluminium 'U' channel brackets with
bolt through fixings

Hinges Lift off, anti-finger trap, gravity
hinges with cover plates to conceal fixings.

Ironmongery finish Aluminium is polyester
powder coated (PPC) with a 'Nickel' finish.

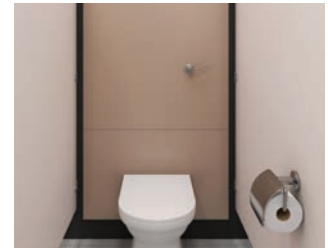
Drilling All doors are pre-drilled to suit hinges and locks supplied. Pilasters are also pre-drilled to suit hinges. Fixing brackets, support legs and coat hooks are to be drilled on site to suit.



IPS PANELS

INTEGRATED PLUMBING SYSTEM.

IPS PANELS conceal plumbing in washrooms while providing easy maintenance access. Installed behind urinals and toilet cubicles, these panels attach to a timber frame and incorporate shadow gaps and access panels. KeKu clips facilitate easy lift-on/lift-off access.



Our commercial washroom range offers two **IPS** system options, both made to order in our UK facility: MR MFC (melamine-faced chipboard core) and Compact Grade laminate. We can manufacture **IPS** PANELS to virtually any size, offering both full and half-height designs to meet your specific site requirements.

MADE TO ORDER TO
YOUR SPECIFICATION.



TECHNICAL SPECIFICATION

Maximum Height Standard up to 2900FFL

Thickness 19mm MR MFC 12mm SGL

Depth 250mm

Floor Clearance 100mm

Décors Available 40+

PERFORMANCE

MR MFC Moisture-resistant Melamine Faced Chipboard panels have a thickness of 18mm and are **perfect for dry environment** washrooms. All edges are sealed and protected with **2mm ABS edging** for added durability and finish.

SGL Solid grade laminate is exceptionally **durable and resistant to impact**, with all surfaces **impervious to water**. Panels have a nominal thickness of 13mm and a black core throughout. All panels are **carefully machined** to provide an elegantly polished, bullnosed black edge.

DETAILING

Lorum Ipsum Issunt, ipsam rem id mo
experfe riorempor alicabo

Lorum Ipsum Issunt, ipsam rem id mo
experfe

Lorum Ipsum Lorum Ipsum Issunt, ip-
sam rem id mo experfe riorempor alicabo.
Issunt, ipsam rem id mo experfe riorempor
alicabo.

Lorum Ipsum Issunt, ipsam rem id mo
experfe

Lorum Ipsum Issunt, ipsam rem id mo
experfe

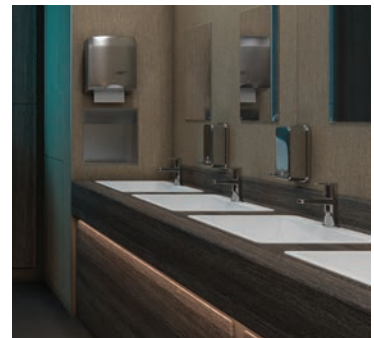
Lorum Ipsum Issunt, ipsam rem id mo ex-
perfe

Lorum Ipsum Issunt, ipsam rem id mo experfe riorempor alicabo. Issunt, ipsam rem id mo experfe
riorempor alicabo.



VANITY UNITS

Our commercial **VANITY** UNITS are designed to complement our toilet cubicle ranges, providing an attractive solution for concealing plumbing in washroom sink areas. Perfectly paired with our cubicles, our laminate surfaces offer a hygienic, easy-to-maintain, and resilient solution, resistant to scratches and impact.



Core material selection depends on the installation environment. For lighter traffic areas with minimal humidity and moisture exposure, our cost-effective MR MFC core, backed by a five-year guarantee, is ideal. High-traffic areas prone to water exposure benefit from our 100% waterproof compact grade/solid grade core, which comes with a 10-year guarantee.

Manufactured in-house, all our **VANITY** UNITS are made to order, allowing us to meet bespoke size requirements. Available in two to five basin configurations, our wall-mounted units include access panels, return end panels (where applicable), an underframe, and a vanity top with upstand and downstand details to prevent water damage. Freestanding units are also available. Complete your design by selecting from our range of complementary wash hand basins.

In addition to laminate, we also offer solid surface commercial **VANITY** UNITS, including custom wash trough designs to meet your specific needs.





WASH TROUGHS



Solid Surface **WASH** TROUGHS offer a luxurious alternative to stainless steel, providing a non-porous, stain-resistant, and durable solution for washroom sink areas. Designed for vanity unit installation, our bespoke trough designs create a sleek and modern aesthetic. Seamlessly integrating basins and drainage systems, these troughs accommodate both wall and deck-mounted taps. Colour fastness is guaranteed under artificial LED lighting.

REPAIRABLE SOLID SURFACE

Solid Surfaces' resilient nature makes it ideal for high-traffic environments like leisure facilities and schools. Minor scratches and chips are easily sanded and buffed out, maintaining a seamless appearance. For cracks, we recommend consulting a certified Solid Surface repair specialist.

HYGENIC & EASY TO MAINTAIN

The non-porous surface of Solid Surface inhibits mould growth, minimising the risk of cross-infection and cross-contamination with proper cleaning. Residue easily wipes away with a damp cloth and mild detergent. This makes Solid Surface a popular choice for healthcare, schools, food preparation areas, hospitality, offices, and residential kitchens. Certified by NSF International as NSF/ANSI Standard 51 for food contact (the highest level), Solid Surface ensures a sanitary solution for commercial bathrooms.

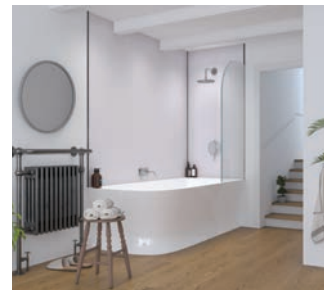
SUSTAINABLE MATERIAL

These wash troughs are designed with a commitment to environmental stewardship, incorporating a significant percentage of pre-consumer recycled materials (between 6% and 20%) into their composition. This dedication to sustainable practices is validated by independent certification, ensuring transparency and accountability in the manufacturing process. By choosing these troughs, projects prioritising environmental responsibility can confidently implement a solution that minimises waste and reduces their ecological footprint.



TRADELINE WATERPROOF PANELLING SYSTEM.

TRADELINE offers a cost-effective, high-quality waterproof shower panel solution for commercial and healthcare projects. Featuring ten high-pressure laminate décors, on MR MDF. Available in both square edge and tongue-and-groove options, these panels offer easy cleaning due to their antibacterial and mould-resistant non-porous surface.



KEY FEATURES

- MR MDF Core
- 2420 x 1200 x 11mm Square Edge
- 2420 x 1180 x 11mm Tongue & Groove
- 2420 x 580 x 11mm Tongue & Groove

QUICK &
EASY TO CLEAN.







WALL LINING SYSTEMS

As a leading manufacturer and supplier of laminate wall lining systems, Rearo Commercial offers five primary solutions: Tradeline, Selkie Board, Bühne, Magnetik, and antimicrobial cladding. Each system is tailored to specific sector needs, considering factors like hygiene and water resistance. Our wall lining solutions provide easy installation, professional results, and minimal maintenance, making them ideal for any commercial space.

SELKIE

Our flagship retail range, also available for residential use, is primarily a bathroom wall panel.

MAGNETIK

A complete cladding system with integrated whiteboard capabilities. The built-in metallic layer allows for both dry-erase writing and magnetic displays, fostering collaboration in co-working spaces. Unlike standard whiteboards, this system provides full floor-to-ceiling coverage.

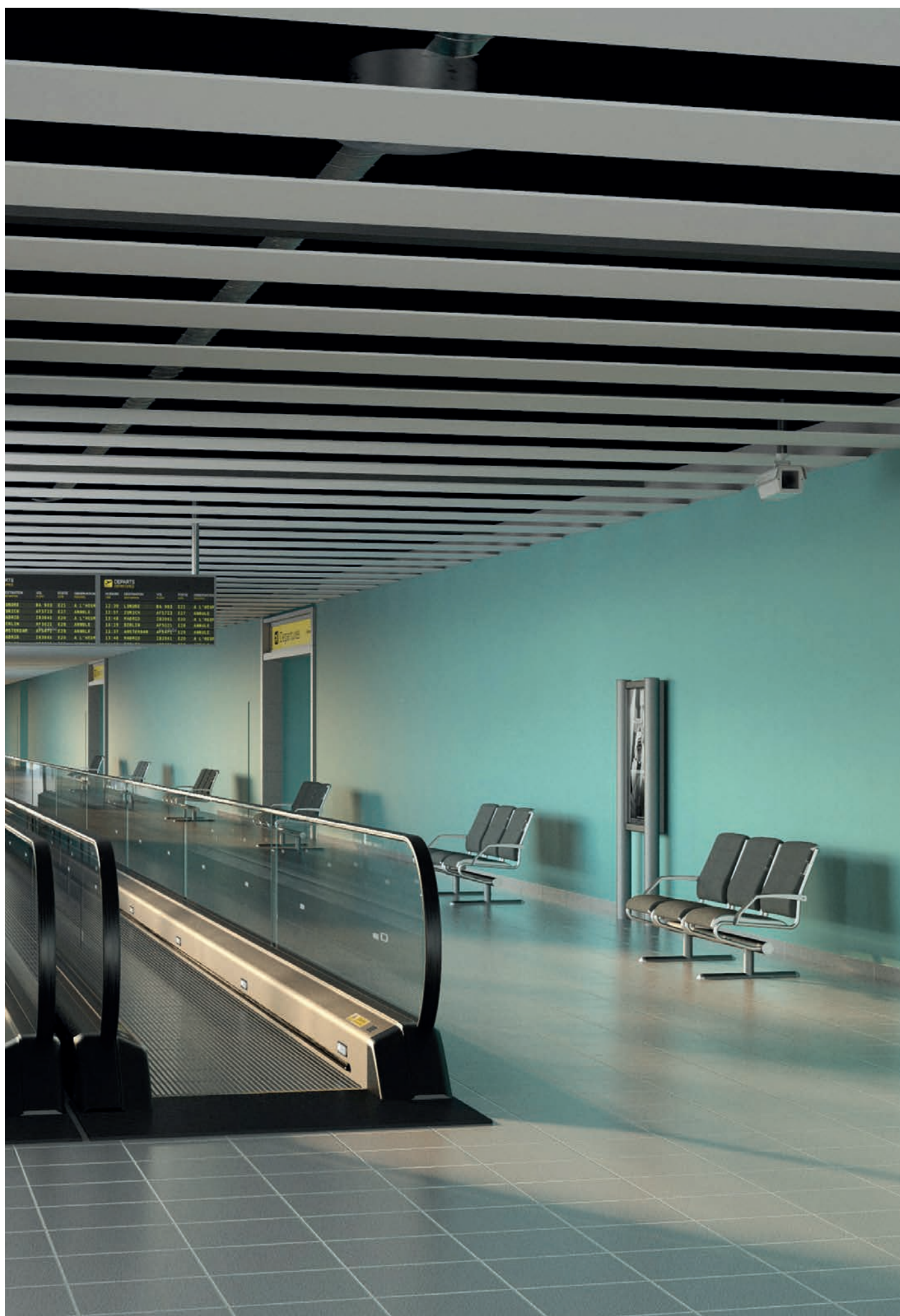
BÜHNE

Designed for high-ceiling applications (up to 3m), such as office developments, this system ensures consistent coverage across large wall areas. Created to meet the fire requirements for public areas.



ANTIMICROBIAL WALL LINING

Inhibits microorganism growth (bacteria, mould, fungi). Incorporated antimicrobial agents disrupt microorganism cell function upon contact. Benefits include enhanced hygiene, reduced infection risk and durability with easy maintenance. Common applications include healthcare, food preparation, education, commercial spaces, and residences.



ABOUT REARO®

REARO is a leading UK manufacturer and supplier of high-quality surface solutions for both commercial and domestic markets. Born in rugged Shetland, and with over 30 years of experience, we offer a wide range of products, including our flagship **SELKIE BOARD** shower panels, **SENSES** kitchen worktops and splashbacks, wall linings, washrooms and toilet cubicles, and integrated plumbing systems.

Supporting a wide range of sectors from healthcare and education to leisure and retail, **REARO** is the trusted choice for architects, designers, and homeowners seeking quality and style.

E: commercial@rearo.co.uk T: 0141 440 0800

Find us online at **www.rearocommercial.co.uk**

